

DECRA Roofing Panels: Do Not Mix Stone-Coated Panel Production Date Codes Greater Than 6 Months

To avoid any slight shift of color-coated stone granules' color tones when mixing DECRA roof panels in the same roof panel style from multiple DECRA factory supply shipments:

DO NOT MIX roof panels with more than 6 months spread between production dates on the same roof installation.

How to locate DECRA production run date information:

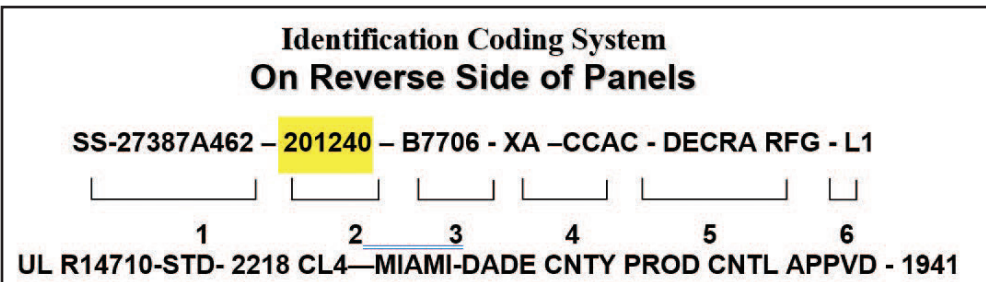
1. DECRA Roof Panels: Pallet Label

Look at the roof panels pallet label. The number is highlighted in yellow for easy reference in the image below.



2. DECRA Roof Panels: Panel Backside Ink-Jet Code

Look at the roof panels backside run inkjet code. This area is highlighted in yellow for easy reference in the image below.



NOTE: Page 2 of this DECRA Technical Bulletin will provide details on how to interpret both of these production date codes.

DECRA Pallet Label – Date Code

Production Day Code '0612': 06/12 (**June 12th**)

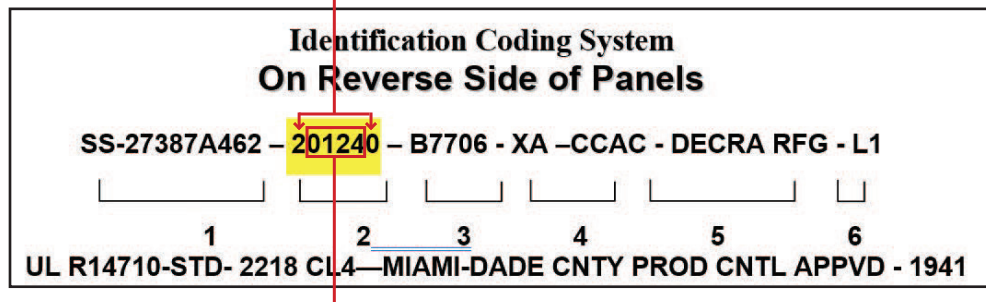


Date Code Production Year Code: '2' and '5' (**2025**)

DECRA Panel Backside Ink-Jet – Date Code

Section 2 in the panel backside code shows the production date.

The first and last number ('2' and '0' in the yellow shaded area) indicates the production year: **2020**.



The middle numbers ('0124') indicates the production day: **January 24th**.

Production Year Code: '2' and '5' (2025) Section 2 in the panel backside code shows the production date. The first and last number ('2' and '0' in the yellow shaded area) indicates the production year: 2020 The middle numbers ('0124') indicates the production day: January 24th